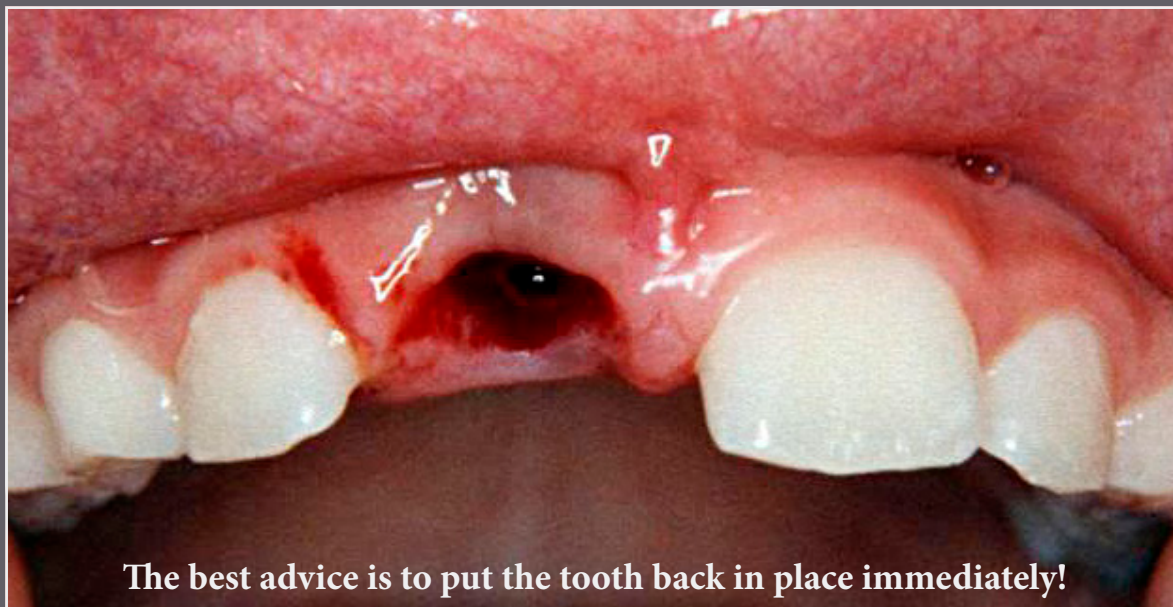


What to do?

Every minute counts!



The best advice is to put the tooth back in place immediately!

If the whole tooth has been knocked out

NOTE: does not apply to children's primary teeth

- ♥ Find the lost tooth without delay!
- ♥ Avoid touching the root and put the tooth back in place – if at all possible.
If the tooth is visibly dirty, quickly rinse under running water or clean in the mouth with saliva.
- ♥ Hold the tooth in place on the way to the dentist.
- ♥ If this is not possible, keep the tooth inside the mouth, or in milk.
Do not let the root dry out!
- ♥ See a dentist as soon as possible.

If parts of a tooth have broken off

- ♥ Find the missing tooth fragment and keep it moist on the way to the dentist.

Call the dentist:



Norsk Tannvern®
www.tannvern.no